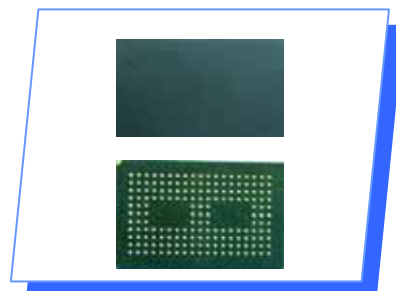


MemoCom's PATA SSD MCP, offering low-power, high performance, and durability, is an ultra-small, complete storage solution for mobile applications. With its industry standard PATA interface, it offers the capacity and features to accelerate computing trends towards greater mobility.



Features

- Solid State Performance - Faster random access due to no mechanical latency
- Greener Technology - No noise, lower power consumption
- Small in Size - 400x smaller than a 1.8" hard-drive
- Light Weight - Less than 1g
- Standard Interface - Standard PATA interface
- Flexible Capacity - Capacity expandable by adding up to three additional NAND flash

Specifications

General	Form Factor	BGA 14 x 22 x 1.6 (mm)
	Capacities	1GB/2GB/4GB/8GB/16GB, expandable up to 32GB
	Interface	PATA
Performance	Read Throughput	40 MB/s (MLC)
	Write Throughput	30 MB/s (MLC)
Power Consumption	Voltage	3.3V
	Idle	1.1mW
	Operating	150mW Typical
Environment	Operating Temperature	0° to 70°C (-20° to 70°C for industrial grade)
	Humidity Non-Operating	5% to 95% RH non-condensing (at temperatures 25° C ~80° C)
Others	Mean-Time Between Failures (SLC)	1,200,000 hours
	Mean-Time Between Failures (MLC)	800,000 hours
	Compliance	Meet the requirements of the RoHS Compliance Directives

Ordering Information

Part No.	Capacities	Form Factor	Interface	Flash Type
MU02G7011BS-b	2GB	14 x 22 x 1.6 (mm)	PATA	SLC
MU04G7011BS-b	4GB	14 x 22 x 1.6 (mm)	PATA	SLC
MU02G7011BM-b	2GB	14 x 22 x 1.6 (mm)	PATA	MLC
MU04G7011BM-b	4GB	14 x 22 x 1.6 (mm)	PATA	MLC
MU08G7011BM-b	8GB	14 x 22 x 1.6 (mm)	PATA	MLC

For sales and product inquiry, please contact MemoCom for further information.