



# PATA SSD

Your Best Storage Partner



MemoCom's PATA SSD is the high-performance storage device, comply with industry standard dimensions and interfaces. It's an ideal drop-in replacement for standard hard disk drive interface. Featuring high speed and high reliability, it is especially suitable for servers and storage devices with large-capacity transaction requirements.

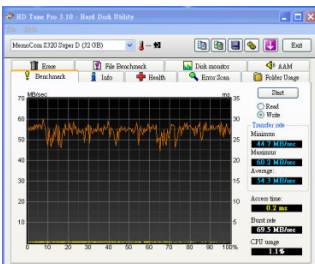
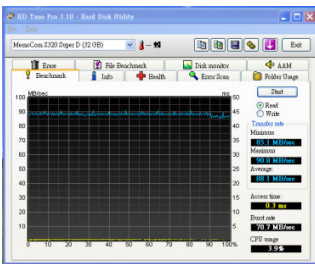
## Features

- Low-power consumption for mobile environment
- Light weight for portable storage solution
- No noise and low heat

## Specifications

General	Form Factor	2.5"
	Physical Dimensions	100.0(W) x 70.0(D) x 9.5(H) (mm)
	Capacities	16GB / 32GB/ 64GB/ 128GB
Performance	Interface	PATA
	Average Access Time	0.3ms
	Sequential Read	80 MB/sec (MLC)
Power Consumption	Sequential Write	40 MB/sec (MLC)
	Voltage	5V ± 5%
	Idle	0.7W
Environment	Operating	2.0W
	Operating Temperature	0° to 70°C (-20° to 70°C for industrial grade)
	Shock	1500G
	Vibration	16G
Compatible	Noise	0dB
	Humidity Non-Operating	5% to 95% RH non-condensing
Others	PATA Interface	- Supports up to Ultra DMA Mode 6 - Built-in ECC (Error Checking & Correcting) functionality and wear-leveling algorithm ensures highly reliable of data transfer
	Compliance	Meet the requirements of the RoHS Compliance Directives.

## High Performance



## High Speed

All	5	100MB	D:Hard Disk [NTFS]
Seq	107.7	50.39	
512K	107.4	31.36	
4K	15.02	1.511	
	Read [MB/s]		Write [MB/s]

## Ordering Information

Model	Capacities	Form Factor	Interface
P160	16GB	2.5"	PATA
P320	32GB	2.5"	PATA
P640	64GB	2.5"	PATA
P1280	128GB	2.5"	PATA

For sales and product inquiry, please contact MemoCom for further information.



Add: 8F-2, 120, Sec 2, Gongdao 5th Rd., Hsinchu City 300, Taiwan  
 Tel: +886-3-5730808 Fax: +886-3-5720518  
 Email: sales@memocom.com.tw